



**EMERALD HILL**  
property developers

## Led Residence

### Lamela II - Stan br. 6 - Prizemlje

Jednoiposoban stan 29.72m<sup>2</sup> Led Residence

**L2 STAN 06**  
**P= 30.19 m<sup>2</sup>**



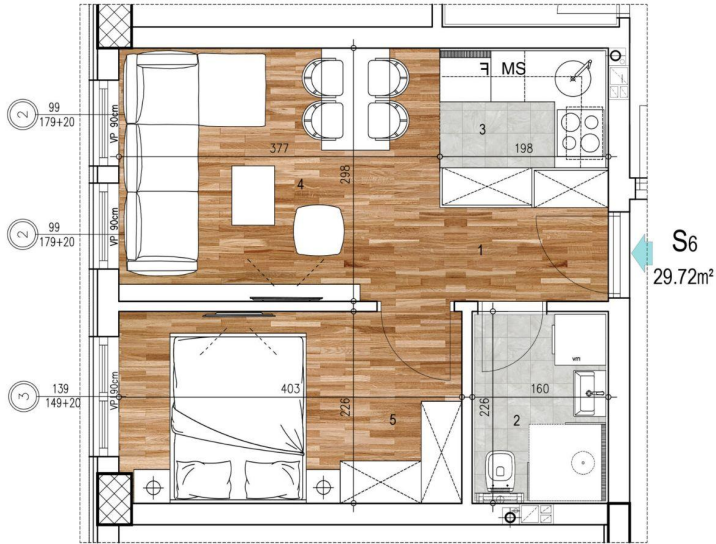
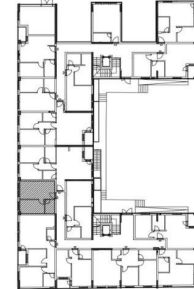


STAN 6  
prizemlje



LED Residence  
Ledinačka

Položaj stana



projektant: ATELJE KRESOVIĆ doo  
Ulica Danila Kiša br.9, Novi Sad

Stan br. 6 - LAMELA 2

red.br.	prostorija	podna obloga	površina m <sup>2</sup>
1	hodnik	parket	2.60
2	kupatilo	ker.pločice	3.60
3	kuhinja	ker.pločice	3.28
4	dnevni boravak sa trpezarijom	parket	11.21
5	spavaća soba	parket	9.03
<b>ukupno</b>			<b>29.72</b>

HODNIK:	2.60m <sup>2</sup>
KUPATILO:	3.60m <sup>2</sup>
KUHINJA:	3.28m <sup>2</sup>
DN.SOBA SA TRP:	11.21m <sup>2</sup>
SPAVAĆA SOBA:	9.03m <sup>2</sup>
UKUPNO:	29.72m <sup>2</sup>