



**EMERALD HILL**  
property developers

## Led Residence

### Lamela II - Stan br. 38 - IV Sprat

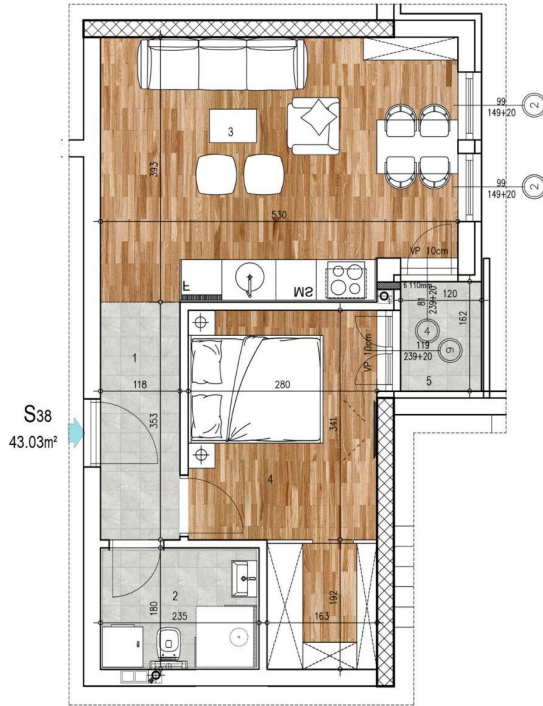
Dvosoban stan  $43.03m^2$  Led Residence

**L2 STAN 38**  
**P= 43.38 m<sup>2</sup>**





STAN 38  
IV sprat



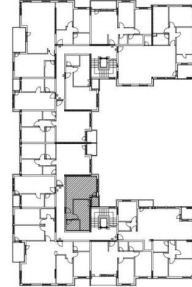
S38  
43.03m<sup>2</sup>

projektant: ATELJE KRESOVIĆ doo  
Ulica Danila Kiša br.9, Novi Sad



LED Residence  
Ledinačka

Položaj stana



Stan br. 38 - LAMELA 2

red. br.	prostorija	podna obloga	površina m <sup>2</sup>
1	hodnik	ker.pločice	4.15
2	kupatilo dnevni	ker.pločice	4.23
3	boravak sa kuhinjom	parket	20.04
4	spavaća soba	parket	12.66
5	terasa	ker.pločice	1.95
<b>ukupno</b>			<b>43.03</b>

<b>HODNIK:</b>	4.15m <sup>2</sup>
<b>KUPATILO:</b>	4.23m <sup>2</sup>
<b>DNEVNI BORAVAK SA KUHINJOM:</b>	20.04m <sup>2</sup>
<b>TERASA:</b>	1.95m <sup>2</sup>
<b>SPAVAĆA SOBA:</b>	12.66m <sup>2</sup>
<b>UKUPNO:</b>	43.03m <sup>2</sup>