



**EMERALD HILL**  
property developers

## Led Residence

### Lamela II - Stan br. 26 - III Sprat

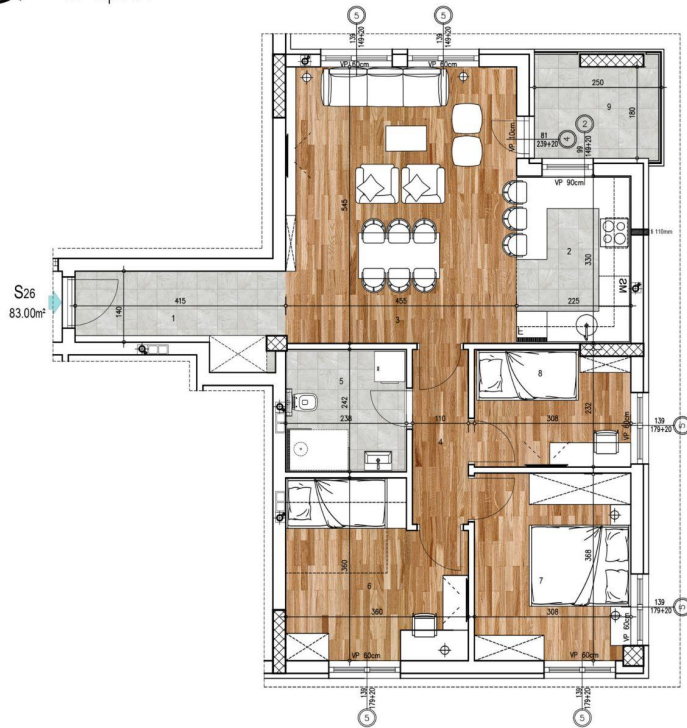
Troiposoban stan  $83.00m^2$  Led Residence

**L2 STAN 10 18 26**  
**P=78.52m<sup>2</sup>**





STAN 26  
III sprat

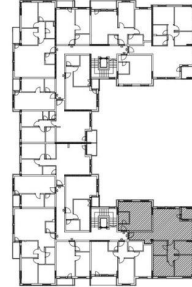


projektant: ATELJE KRESOVIĆ doo  
Ulica Danila Kiša br.9, Novi Sad



LED Residence  
Ledinačka

Položaj stana



Stan br. 26 - LAMELA 2

red.br.	prostorija	podna obloga	površina m <sup>2</sup>
1	hodnik	ker.pločice	6.51
2	kupatilo	ker.pločice	7.42
3	dnevni boravak sa kuhinjom	parket/ ker.pločice	24.79
4	degažman	parket	3.79
5	kupatilo	parket	5.73
6	spavaća soba	parket	11.70
7	spavaća soba	parket	11.34
8	spavaća soba	parket	7.00
9	terasa	parket	4.72
<b>ukupno</b>			<b>83.00</b>

HODNIK:	6.51m <sup>2</sup>
KUPATILO:	7.42m <sup>2</sup>
KUPATILO 2:	5.73m <sup>2</sup>
DNEVNI BORAVAK SA KUHINJOM:	24.79m <sup>2</sup>
TERASA:	4.72m <sup>2</sup>
DEGAŽMAN:	3.79m <sup>2</sup>
SPAVAĆA SOBA:	11.70m <sup>2</sup>
SPAVAĆA SOBA:	11.34m <sup>2</sup>
SPAVAĆA SOBA:	7.00m <sup>2</sup>
UKUPNO:	83.00m <sup>2</sup>