



EMERALD HILL
property developers

Led Residence

Lamela II - Stan br. 13 - I Sprat

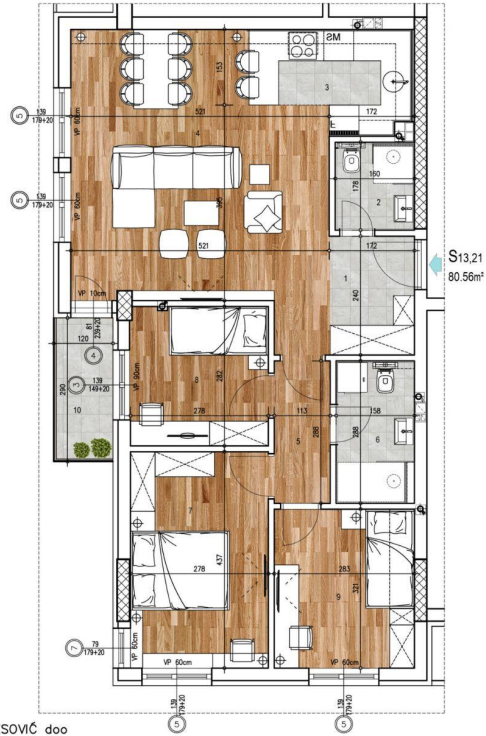
Troiposoban stan $80.56m^2$ Led Residence

L2 STAN 13/21/29
P= 81.74 m²





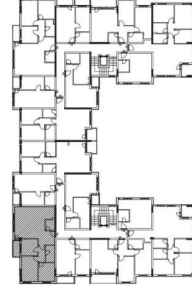
STAN 13/21
I/II sprat



projektant: ATELJE KRESOVIĆ doo
Ulica Danila Kiša br.9, Novi Sad

 LED Residence
Ledinačka

Položaj stana



Stan br. 13/21 - LAMELA 2

| red. br. | prostorija | podna obloga | površina m ² |
|---------------|-------------------------------|--------------|----------------------------|
| 1 | hodnik | ker. pločice | 5.35 |
| 2 | kupatilo | ker. pločice | 2.88 |
| 3 | kuhinja | ker. pločice | 5.97 |
| 4 | dnevni boravak sa trpezarijom | parket | 26.01 |
| 5 | degažman | parket | 3.25 |
| 6 | kupatilo | ker. pločice | 4.54 |
| 7 | spavaća soba | parket | 12.16 |
| 8 | spavaća soba | parket | 7.84 |
| 9 | spavaća soba | parket | 9.08 |
| 10 | terasa | ker. pločice | 3.48 |
| ukupno | | | 80.56 |

| | |
|-----------------|---------------------|
| HODNIK: | 5.35m ² |
| KUPATILO: | 2.88m ² |
| KUPATILO 2: | 4.54m ² |
| KUHINJA: | 5.97m ² |
| DN.SOBA SA TRP: | 26.01m ² |
| TERASA: | 3.48m ² |
| DEGAŽMAN: | 3.25m ² |
| SPAVAĆA SOBA: | 12.16m ² |
| SPAVAĆA SOBA: | 7.84m ² |
| SPAVAĆA SOBA: | 9.08m ² |
| UKUPNO: | 80.56m ² |